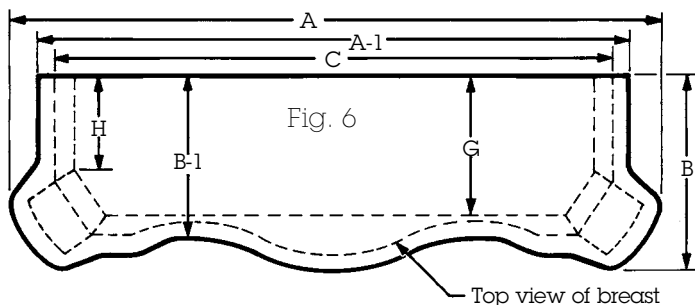
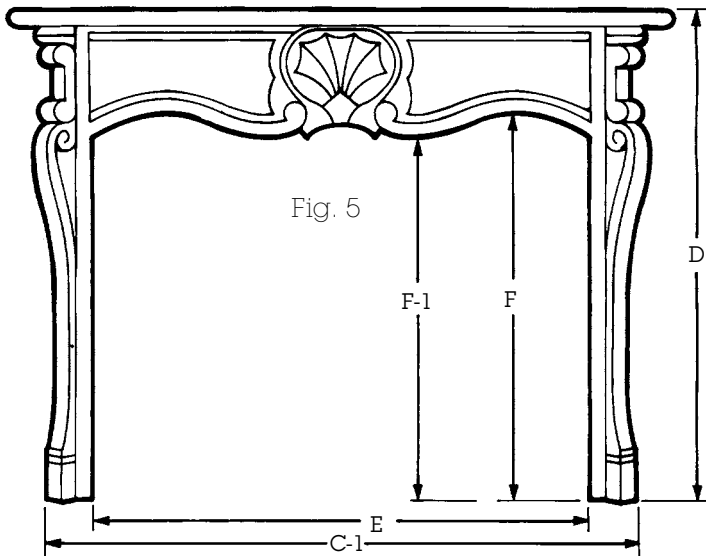
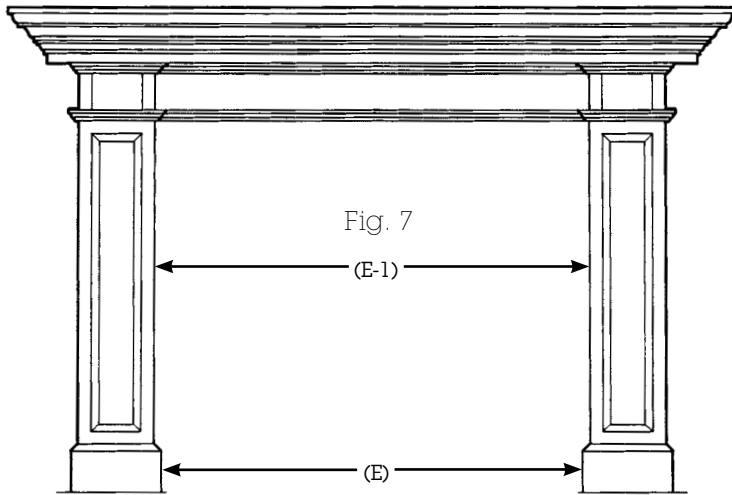


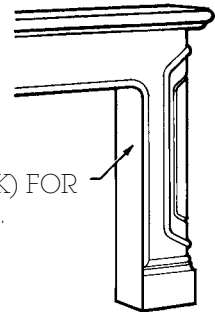
PINECREST® STANDARD SIZE MANTELS

Because of the complex configuration of some mantels, there may be more than one dimension for shelf length, shelf depth, width of body and mantel opening height. See figures 5, 6 and 7 below.

- A Length of shelf (Longest Dimension) – Fig.6
- A-1 Length of shelf (Shortest Dimension) – Fig.6
- B Depth of shelf (Largest Dimension) – Fig.6
- B-1 Depth of shelf (Smallest Dimension) – Fig.6
- C Back width of base – Fig.6
- C-1 Front width of base – Fig.5
- D Height – Fig.5
- E Mantel opening width at base – Fig.5 and Fig.7
- E-1 Mantel opening width above base – Fig.7
- F Mantel opening height (Highest Dimension) – Fig.5
- F-1 Mantel opening height (Lowest Dimension) – Fig.5
- G Projection for Surround (Inside Dimension) – Fig.6
- H Projection (except mantels #1013, and 1048) to corner block 4-1/2" (Inside Dimension) – Fig.6
 1013 – 3-7/8" projection
 1048 – 3-1/16" projection

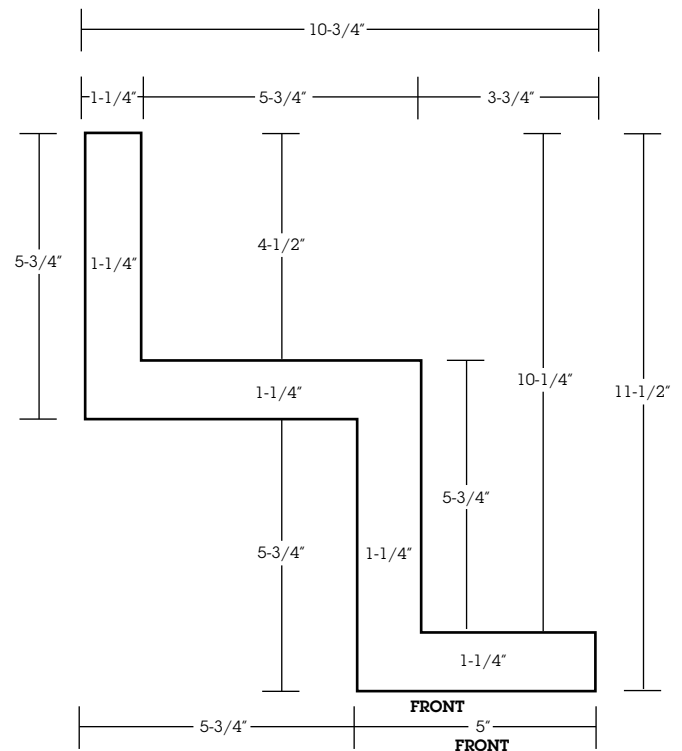


For installations without projecting surrounds, trimmer boards are needed for legs and breast of mantel to cover standard size projections. Trimmer boards are shipped unattached to mantels.



TRIMMER BOARDS (3/4" THICK) FOR MANTELS WITH PROJECTION.

SECTION VIEW OF MANTEL #1049



PINECREST® STANDARD SIZE MANTELS

Mantel Design No.	A Length of Shelf (Longest Dimension)	A-1 Length of Shelf (Shortest Dimension)	B Depth of Shelf (Largest Dimension)	B-1 Depth of Shelf (Smallest Dimension)	C Back Width of Base	C-1 Front Width of Base	D Height	E Mantel Opening Width At Base	E-1 Mantel Opening Width Above Base	F Mantel Opening Height (Highest Dimension)	F-1 Mantel Opening Height (Lowest Dimension)	G Projection for Surround (Inside Dimension)
1000 *	66"	63"	11"	9-5/8"	60"	64"	46"	48"	48-3/4"	39"	36"	6-3/8"
1001 *	66"	63"	11"	9-5/8"	60"	64"	46"	48"	48-3/4"	39"	36"	6-3/8"
1002 *	66"	63"	11"	9-5/8"	60"	64"	46"	48"	48"	39"	36"	6-3/8"
1006 and 1006N	72"	70"	14"	10"	64"	64"	54"	50"	50"	37"	37"	4-1/2"
1009	75"	75"	10"	10"	67"	67"	50"	48"	48"	36"	36"	4-1/2"
1010 *	66"	63"	11"	9-5/8"	60"	64"	46"	48"	48"	39"	36"	6-3/8"
1011 *	66"	63"	11"	9-5/8"	60"	64"	46"	48"	48-3/4"	39"	36"	6-3/8"
1012	70"	70"	10-1/2"	10-1/2"	68"	68"	51"	48"	48"	37"	37"	4-1/2"
1013 *	66"	63"	11"	9-5/8"	60"	64"	46"	48"	48-3/4"	38"	36"	6-3/8"
1015	66"	66"	10-1/2"	10-1/2"	63"	63"	51"	48"	48"	37"	37"	4-1/2"
1016 *	66"	63"	11"	9-5/8"	60"	64"	46"	48"	48-3/4"	39"	36"	6-3/8"
1017 *	66"	63"	11"	9-5/8"	60"	64"	46"	48"	48-3/4"	39"	36"	6-3/8"
1020 **	77"	77"	11-1/2"	11-1/2"	68"	68"	58"	54"	57"	39"	39"	4-1/2"
1021	70"	70"	11"	11"	66"	66"	55"	48"	48"	40"	40"	4-1/2"
1022	72"	72"	10"	10"	67"	67"	57"	48"	48"	37-1/2"	24"	4-1/2"
1024 FLUSH MOUNT	90"	90"	15"	15"	78"	78"	69"	62"	62"	54"	54"	0"
1025 *	67"	64"	10-1/2"	8-1/2"	61"	65"	52"	48"	48"	39"	36"	6-3/8"
1027 *	69"	66"	12"	9-5/8"	64"	67"	52"	49"	49-3/4"	40"	37"	6-3/8"
1045	90"	90"	17-1/2"	17-1/2"	72"	72"	55"	49"	50-1/2"	38"	36"	4-1/2"
1048 *	67"	67"	12"	12"	61"	65"	51"	48"	48-3/4"	39"	36"	6-3/8"
1049	81"	81"	15"	15"	77-1/2"	75-1/2"	52"	51"	53-1/2"	37"	31"	4-1/2"
1056	90"	90"	16"	16"	80"	80"	59"	48"	48"	44"	38"	5"
1072	73"	73"	11"	8-1/4"	64"	64"	53"	48"	49-1/2"	36-1/2"	36-1/2"	4-1/2"
1076 FLUSH MOUNT	72"	72"	12"	12"	67"	67"	53"	48"	48"	36"	36"	0"
1078 FLUSH MOUNT	75"	75"	13"	13"	75"	75"	66"	48"	48"	44"	44"	0"
1086	78"	71"	11"	9"	73"	73"	52"	48"	48"	36"	36"	4-1/2"
1129	84"	77"	16-1/2"	11-1/2"	74"	74"	55"	49"	49"	36"	36"	4-1/2"
1152	73"	73"	14"	14"	70"	70"	55"	48"	49-1/2"	40"	40"	4-1/2"
HM 1182 HALF MANTEL	79"	79"	10"	10"	72"	72"	11"					4-1/2"
HM 1191 WRAP AROUND HALF MANTEL	ADVISE WALL SIZE.		9"	9"			17"					0"
1197 FLUSH MOUNT	72"	72"	14"	14"	72"	72"	65"	48"	48"	43"	43"	0"
1198 WRAP AROUND	ADVISE DIMENSIONS.											
1199	98"	98"	18-1/2"	18-1/2"	86"	86"	61"	63"	63"	45"	45"	7-1/2"

* (H) Projection to corner block 4-1/2" (inside dimension). See figure 6.

** Notch in upper part of leg is 1-1/2" x 6"H.

PINECREST® STANDARD SIZE MANTEL/OVERMANTEL COMBINATIONS

Mantel Design No.	A Length of Shelf (Longest Dimension)	A-1 Length of Shelf (Shortest Dimension)	B ** Depth of Shelf (Largest Dimension)	B-1 ** Depth of Shelf (Smallest Dimension)	C Back Width of Base	C-1 *** Front Width of Base	D *** Height	E Mantel Opening Width At Base	E-1 Mantel Opening Width Above Base	F Mantel Opening Height (Highest Dimension)	F-1 Mantel Opening Height (Lowest Dimension)	G Projection for Surround (Inside Dimension)
1000 MANTEL *	66"	63"	11"	9-5/8"	60"	64"	46"	48"	48-3/4"	39"	36"	6-3/8"
1000-1 OVERMANTEL / OPEN 1000-2 OVERMANTEL / RAISED PANEL	**THE SHELF DEPTH OF MANTEL 1000 IS 8-1/2" AT (B-1) DIMENSION WHEN COMBINED WITH THE OVERMANTEL. ***HEIGHT OF THE OVERMANTEL WHEN COMBINED WITH MANTEL 1000 FOR CEILING HEIGHTS OF: 8'-50", 9'-62", 10'-74", 11'-86", 12'-98"; WIDTH (C-1) 55-1/2"											
1023 MANTEL	76"	76"	22"	22"	67"	67"	74"	48"	48"	58"	58"	6-1/4"
1023-3 OVERMANTEL	**THE SHELF DEPTH OF MANTEL 1023 IS 5" AT (B-1) DIMENSION WHEN COMBINED WITH THE OVERMANTEL. ***HEIGHT OF THE OVERMANTEL WHEN COMBINED WITH MANTEL 1023 FOR CEILING HEIGHTS OF: 10'-46", 11'-58", 12'-70"; WIDTH (C-1) 64"											
1028 MANTEL	78"	78"	12-1/2"	12-1/2"	74"	74"	53"	52"	53-1/2"	39"	36"	5-3/4"
1028-1 OVERMANTEL / OPEN 1028-2 OVERMANTEL / RAISED PANEL	**THE SHELF DEPTH OF MANTEL 1028 IS 10" AT (B-1) DIMENSION WHEN COMBINED WITH THE OVERMANTEL. ***HEIGHT OF THE OVERMANTEL WHEN COMBINED WITH MANTEL 1028 FOR CEILING HEIGHTS OF: 8'-43", 9'-55", 10'-67", 11'-79", 12'-91"; WIDTH (C-1) 69"											
1029 MANTEL *	80"	77"	11-1/2"	9-5/8"	75"	78"	52"	63"	63"	41"	38"	6-3/8"
1029-1 OVERMANTEL / OPEN 1029-2 OVERMANTEL / RAISED PANEL	**THE SHELF DEPTH OF MANTEL 1029 IS 6-5/8" AT (B-1) DIMENSION WHEN COMBINED WITH THE OVERMANTEL. ***HEIGHT OF THE OVERMANTEL WHEN COMBINED WITH MANTEL 1029 FOR CEILING HEIGHTS OF: 8'-44", 9'-56", 10'-68", 11'-80", 12'-92"; WIDTH (C-1) 74-1/2"											